



# TRANSFORMING A CITY INTO A “LEARNING COMMUNITY”: A PILOT STUDY IN BRAZIL

BERTHOUD, C.M.E.; CAMPOS, L.M.M.; CASSIANO, T.A.S.; ZANITTI, F.M.F

---

PRESENTER: DR. CRISTIANA MERCADANTE ESPER BERTHOUD

SECRETARY OF EDUCATION – CITY OF TREMEMBÉ, SÃO PAULO, BRAZIL





# PILOT PROJECT DEVELOPED IN PARTNERSHIP:

---

Tremembé CITY  
HALL



A Brazilian Non Profit  
Organization





# What is Learning Communities

---

It is a project of school transformation, which deeply transforms the school and its context through a participatory education.

The heart of the process is to transform people's interaction based on egalitarian dialogue.

Based on the same principles, this pilot study is investigating if and how an entire city, neighborhood by neighborhood can be transformed as well.



# What is Learning Communities

---

Learning Communities is a project based on a set of evidence based Successful Educational Actions (SEAs) aimed at fostering social and educational transformation. Combining science and utopian dreams, the project improves the academic achievement of all students and develops a better coexistence and attitudes towards social solidarity. Its key features are efficiency, equity and social cohesion. This educational model is in line with international scientific theories that emphasise two key factors for learning in today's society: interactions and community involvement



CREA (Centre for Social and Educational Research) of Barcelona, based on the theories of Habermas and Paulo Freire, has developed the concept of **dialogic learning**, which is a dynamic key. To make possible such transformation, seven concepts must be applied: (1) Egalitarian dialogue; (2) cultural intelligence; (3) instrumental dimension; (4) transformation; (5) solidarity; (6) meaning creation and (7) equality of differences. (Flecha, R. (2000))



The **process of transformation** occurs in 5 phases starting with a Sensitization phase where families, students, neighbors and school personnel are invited to work together.



**RAISING  
AWARENESS**



**DECISION  
MAKE**



**DREAM**



**SELECTION  
OF  
PRIORITIES**



**PLANNING**



# PROJECT PURPOSE

---

Applying the same principles and the same phases implemented within schools this PROJECT is investigating IF AND HOW an entire city, neighborhood by neighborhood, can be transformed as well.

To bring people to dream, plan and implement actions together to transform public spaces into learning spaces!!!



# PROJECT PURPOSE

---

Throughout the phases of the implementation process, each family and each individual will have the opportunity to decide whether to participate, to analyze and better understand the family relations and neighbor relations in the communities and to democratically dream and prioritize what to do to transform their neighborhood into a better place to live in.





# DIALOGIC LEARNING

---

Dialogic learning happens through equal dialogues, in interactions whereby cultural intelligence is recognised in all people. Furthermore, “Dialogic Learning is produced in interactions, it increases instrumental learning, it encourages the creation of personal and social meaning. It is guided by fundamental principles and in those in which equality and difference are compatible values and mutually rewarding” (In Aubert, A.; Flecha, A.; García, C.; Flecha, R.; Racionero, S.; 2008, Pág 167)



# Project assumptions

---

Considering dialogic learning is produced in interactions, it is believed that when we increase spaces and opportunities for INTERACTIONS que relationships will increase and the neighborhood may become a better place for all. Communities may be transformed into LEARNING COMMUNITIES!



# City of TREMEMBÉ

Tremembe is a small city, with a population of 44.000 inhabitants, distancing one and a half hours from the State Capital, the city of Sao Paulo, in the southeast of Brazil. The economy is based on agricultural and local market.





# This initial phase

---

As part of this larger intervention, this study focuses on the diagnosis process conducted in a rural neighborhood in the process of transformation and its implication to the larger project, considering the initial phases are key elements to the success of the implementation



# Research Objectives

---

- (1) To characterize the neighborhood focusing on family relations and patterns of community interactions;
- (2) To analyze expectations of quality of life and level of involvement during Sensitization Phase and
- (3) To understand the reasons for joining or not the project during the Decision Make Phase.



# METHOD – Participatory Action Research

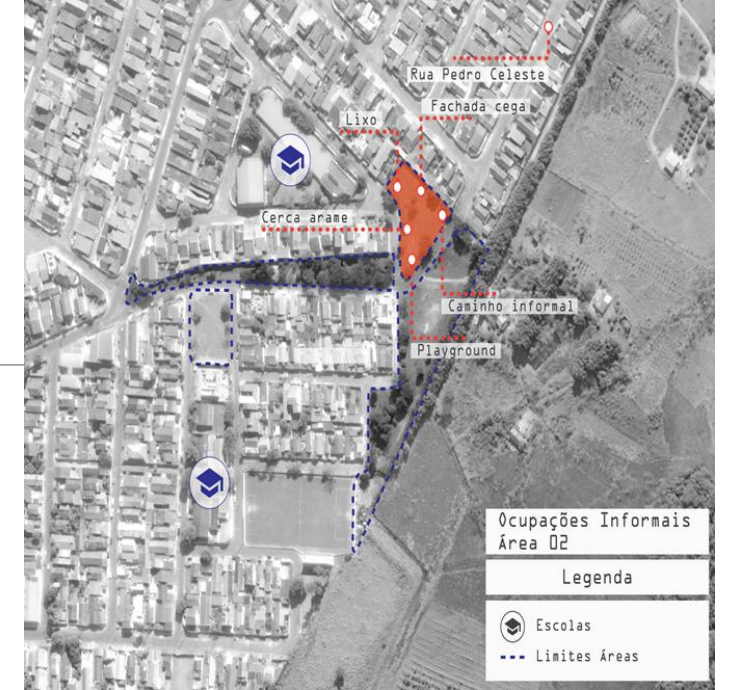
(reflection, data collection and action)

---





# The neighborhood





# Raising Awareness Sessions

---

- ➔ People were invited to a meeting in the school setting
- ➔ Project was presented and people participated in small groups dynamics
- ➔ Survey began
- ➔ During a second meeting people walked to the square to explore







# The space to be remodeled



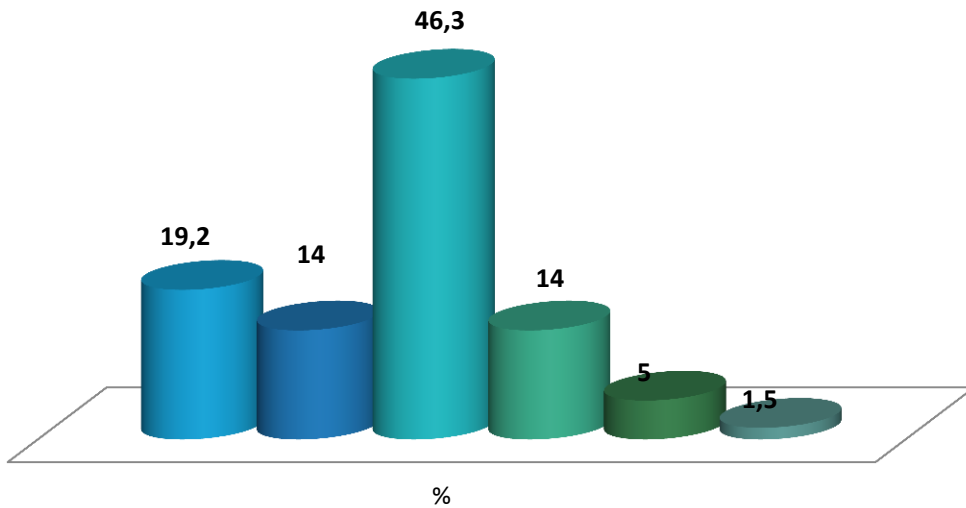


# SURVEY RESULTS

214 respondents, both genders, from 15 to over 60 years of age

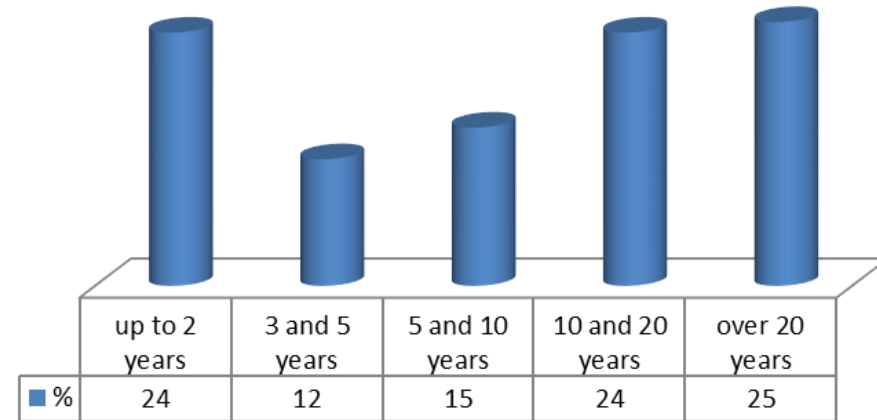
age

■ 15 to 17 ■ 18 to 25 ■ 26 to 40 ■ 41 to 50 ■ 51 to 60 ■ over 60



49% have lived in the neighborhood between 10 and over 20 years

How long have you lived in the neighborhood?

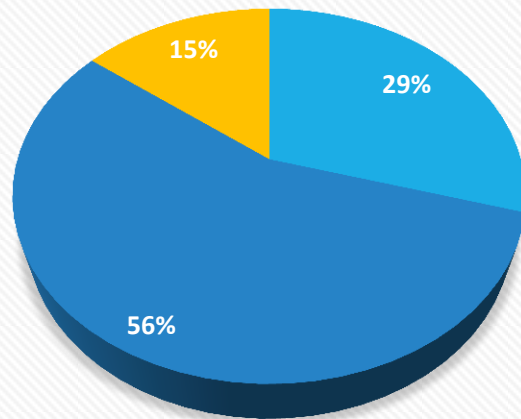




# SURVEY RESULTS

56% of the houses have  
between 4 to 6 people

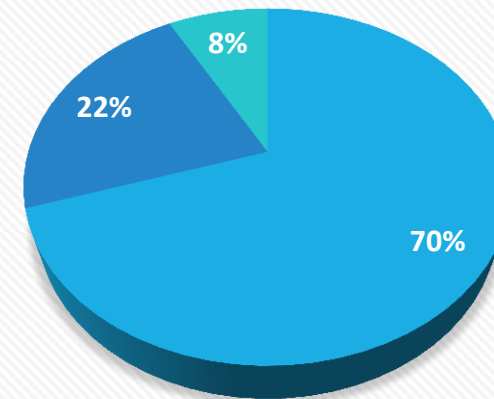
Number of people living in the house



■ up to 3 ■ between 4 and 6 ■ over 6

70% of the Family settings are:  
parentes and children living together

family settings

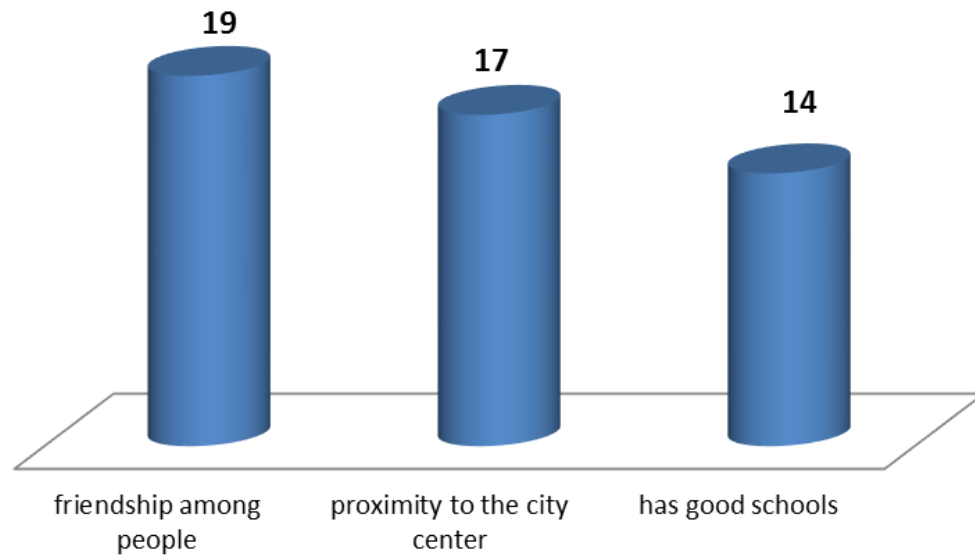


■ parents and children ■ parents, children and other relatives ■ only adults

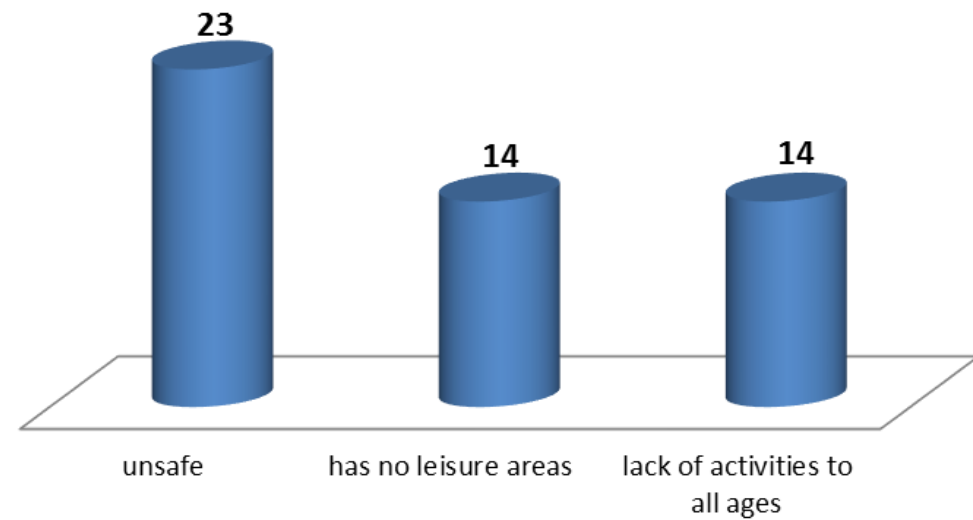


# RESULTS

## 3 things you LIKE in your neighborhood



## 3 things you DO NOT LIKE in your neighborhood





# Rating life in the neighborhood

---

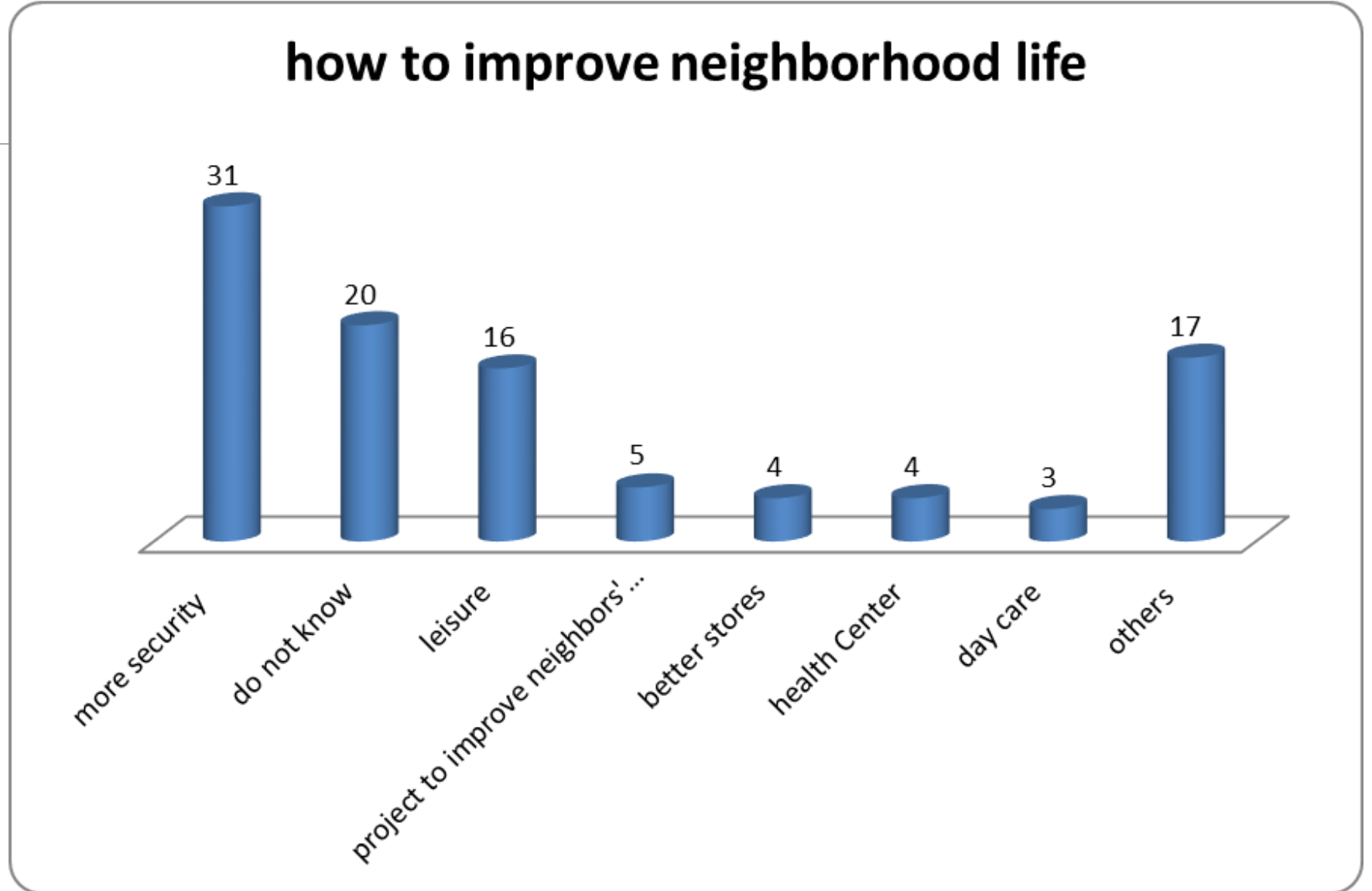
From 1 to 5 how  
do you rate life  
in your  
neighborhood?

3,69



# Discussion

People have low expectations about how the life can be improved beyond government initiatives

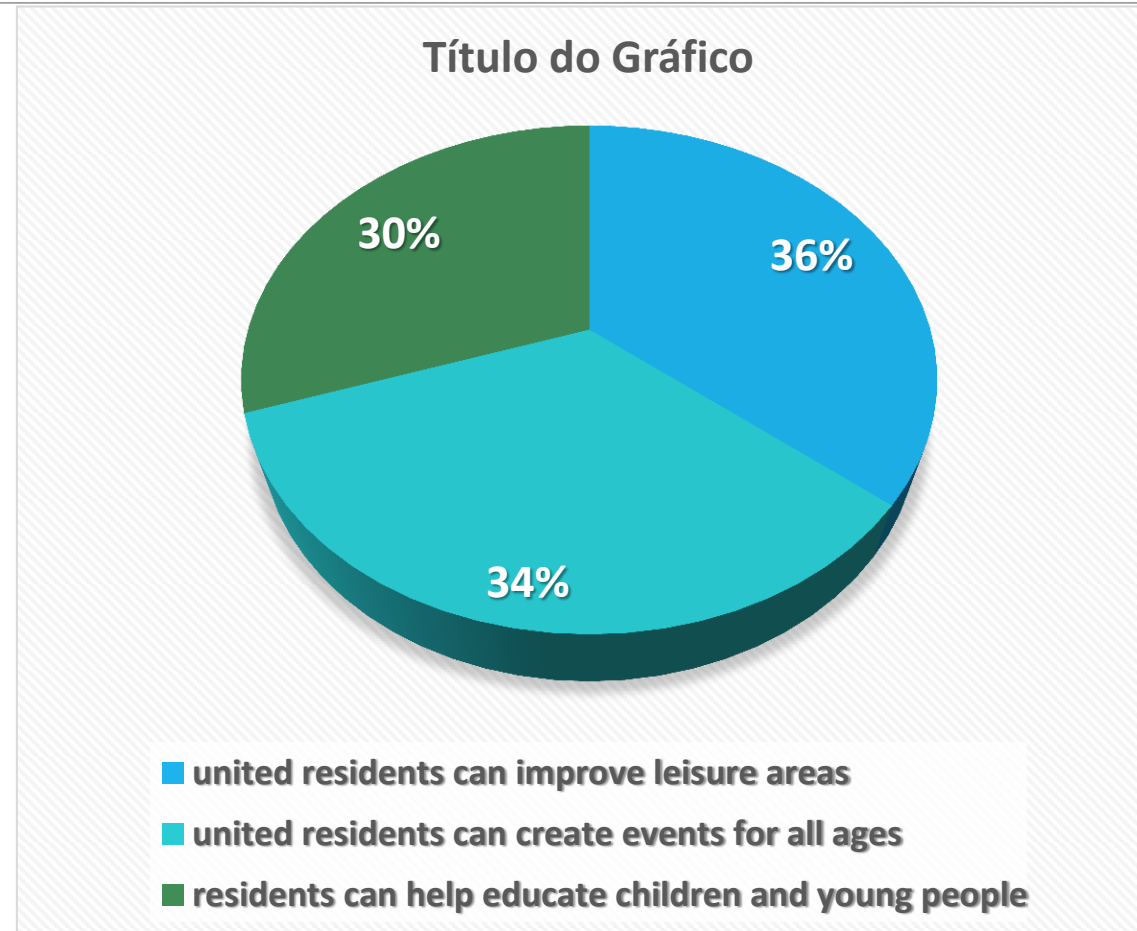




Do you believe that a project with the participation of the residents can improve the life in the neighborhood?  
(choose 3 options)

# Discussion

The results show people do believe that united residents can help to improve the neighborhood regarding lack of LEISURE and also helping the education of youngest







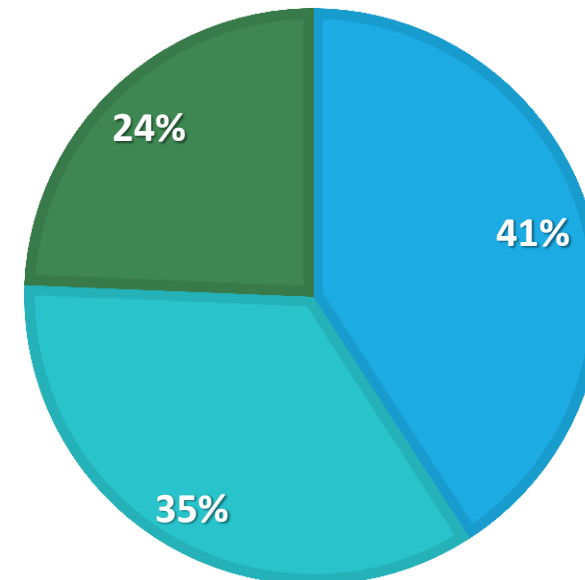
In your opinion how is the relationship between people in your neighborhood?

# Discussion

---

Overall people qualify the relationships between residents as weak and/or restricted to those living close by

- people relate with those who live close by
- I relate well with people in my neighborhood
- I do not see much interaction between people in my neighborhood





In your opinion what would IMPROVE relationship between neighbors?

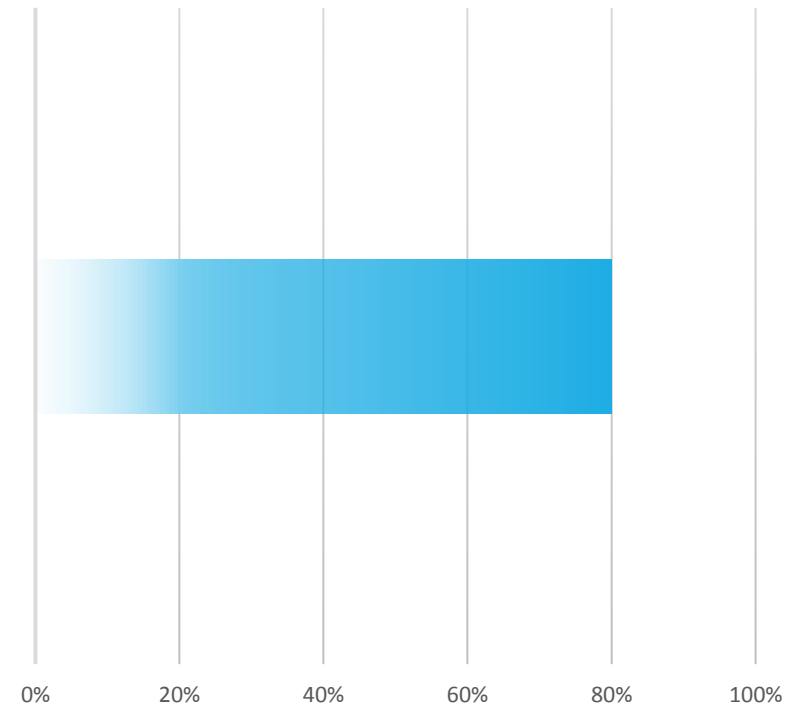
# Discussion

---

The majority of participants (80%) attributed the solution to a government action and not to something the residents could do themselves

## WHAT WOULD IMPROVE RELATIONSHIPS:

more security to improve walkability





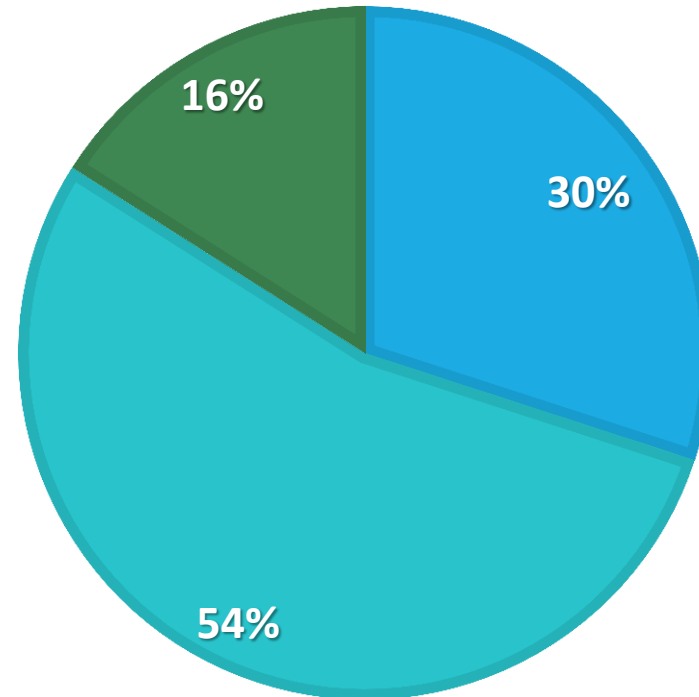
Would you be willing to participate in a project to unite the residents and build better public spaces and relationships?

## Discussion

---

The majority of participants (54%) would participate if they believed was good, which opens up opportunities to involve the community.

- I am not sure
- If the project is good I would participate
- No, I am not interested



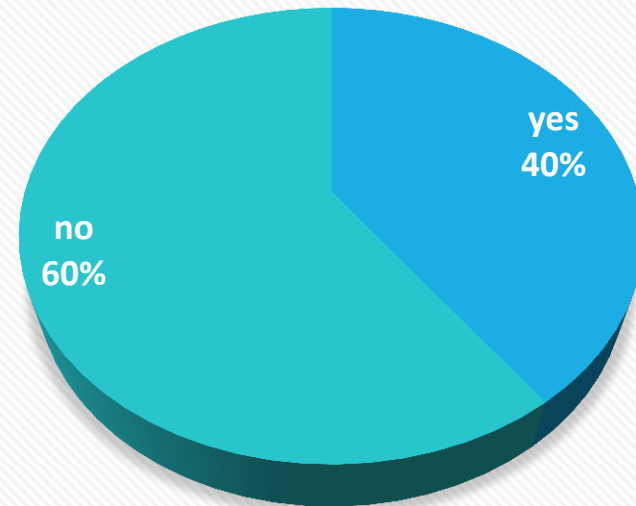


# Discussion

---

Although the Project is implemented in all schools in the neighborhood 60% do not know anything about it

Do you know the Learning Community Project within schools?



■ yes ■ no



# Some conclusions

---

Considering we are at an early stage of the process, the results will help to evaluate and direct the next actions. In general, people are not satisfied with the structure of the neighborhood and with the quality of life, and show low perspective in building participatory solutions.

The Learning Communities principles can be very helpful to transform quality and kind of interactions resulting in a better community to be shared by all.